

## **Frio Street Closure Sunday 5/6/18**

Frio Street will be closed from the driveway south of Cesar Chavez to just south of W. Travis to allow for mill and overlay operations from Buena Vista to Houston. The closure will be in effect from 5/6/18 (Sunday) at 330pm to 5/7/18 (Monday) at 7am. The intent is to complete the paving operation in the shortest amount of time with the least amount of disruption to UTSA, Via and other businesses in the area.

Off Duty officers will be on site at each intersection (four total) beginning at 4pm Sunday afternoon through completion.

Message boards will be placed at the NE Corner of Buena Vista and at Frio just south of Commerce on the east side of the road notifying the traveling public of the upcoming closure.

All of Frio Street between Cesar Chavez will be paved between Cesar Chavez and Houston by 7am Monday morning, pending unforeseen circumstances, such as weather or major material/equipment malfunction.

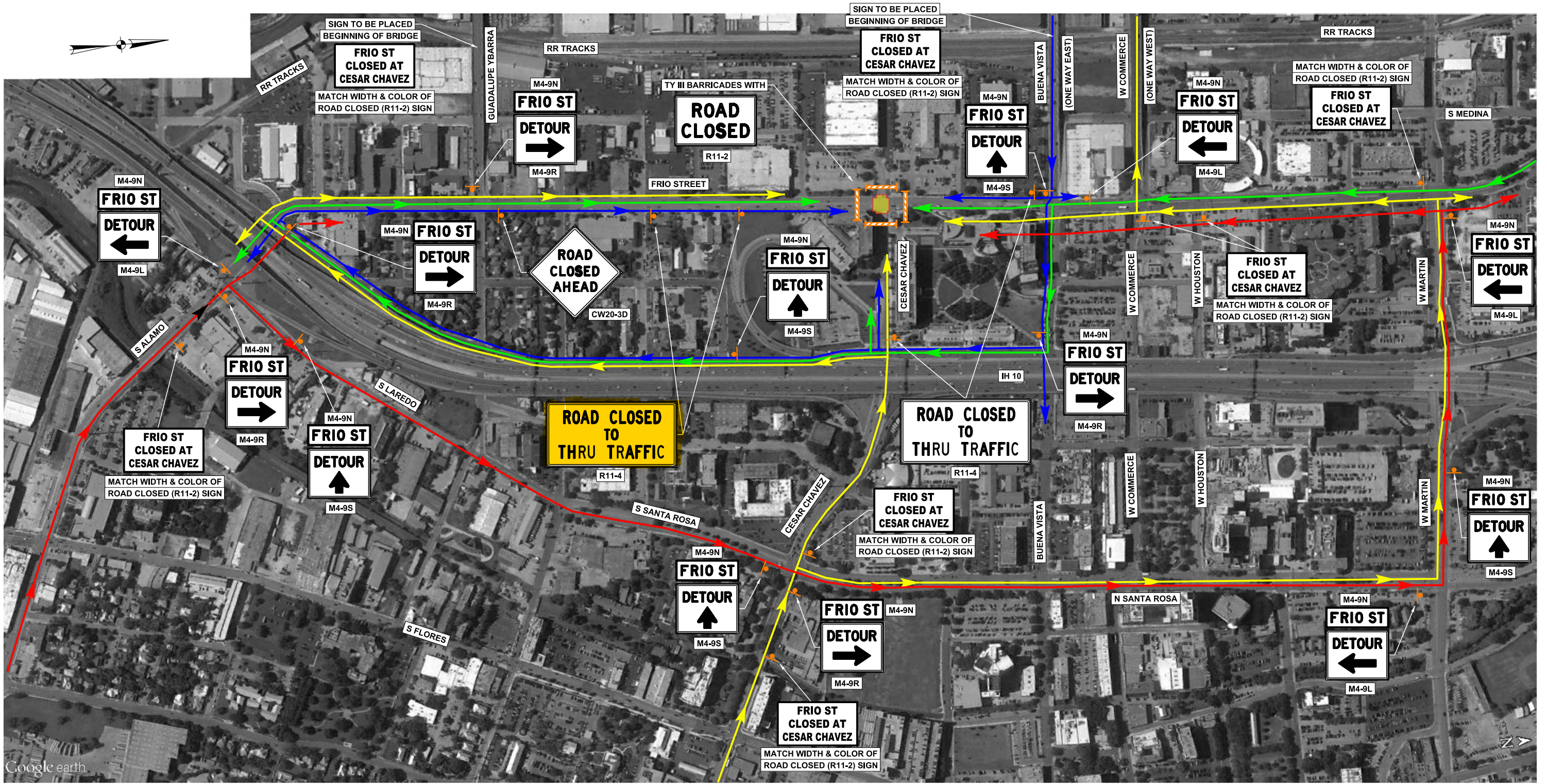
Temporary tabs will be placed to proposed striping layout, until permanent striping is put in place. (14 days after final asphalt per CoSA specification)

Traffic will be detoured using the attached closure maps.

Emergency Contact Information:

E-Z Bel

Manuel Avalos (210) 669-0755  
Stephen Park (210) 336-8992



**CONSTRUCTION PHASING AND SEQUENCE OF WORK - PHASE 3A**

1. INSTALL TEMPORARY TRAFFIC CONTROL SIGNAGE AS SHOWN, CLOSING THE FRIO STREET AT CESAR CHAVEZ INTERSECTION TO TRAFFIC. MINIMUM SIGN SPACING DISTANCE SHALL BE AS NOTED BELOW, BUT SIGN LOCATIONS MAY BE ADJUSTED AS NECESSARY TO MEET FIELD CONDITIONS.
 

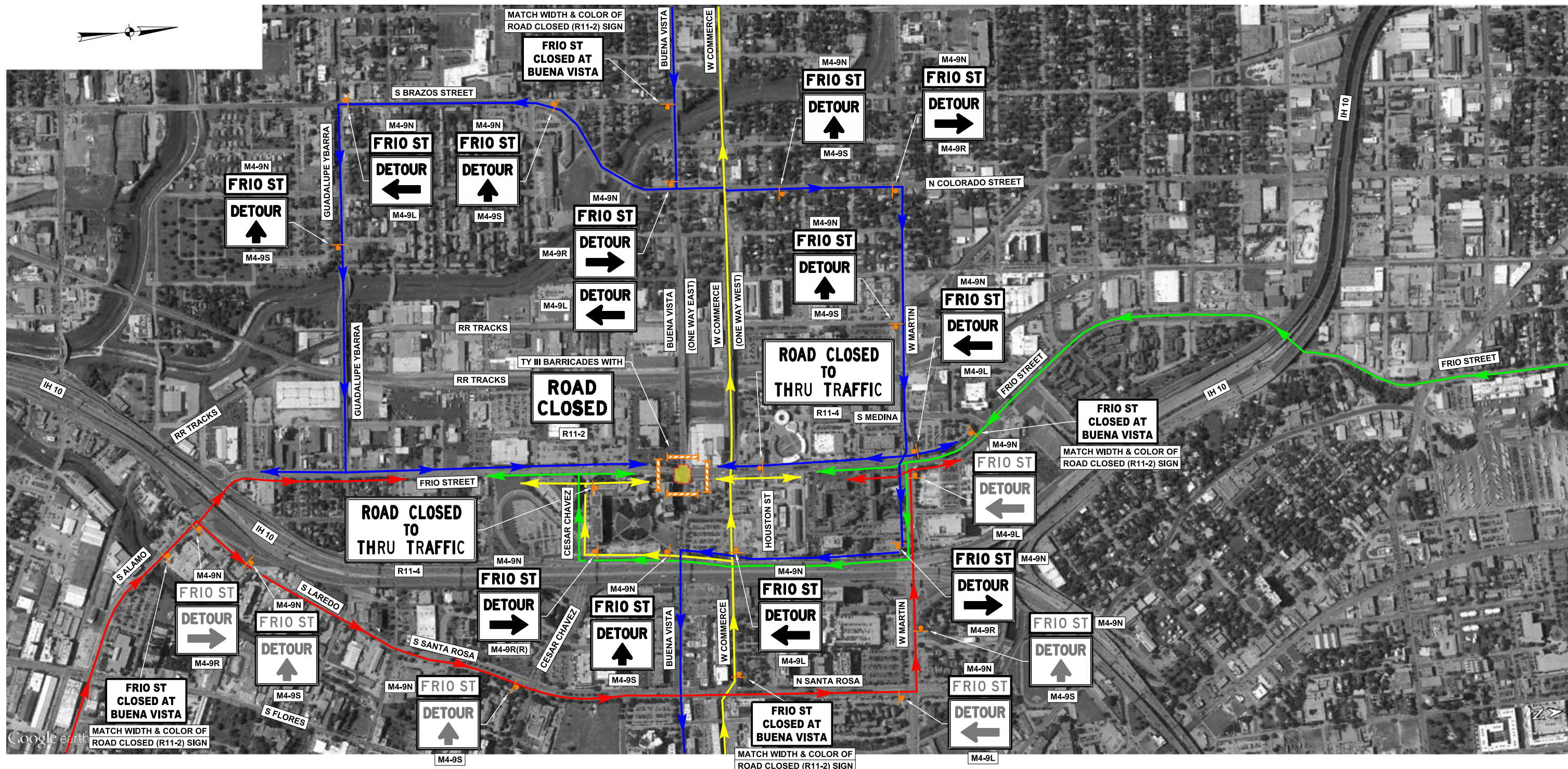
POSTED SPEED (MPH)	MIN. SIGN SPACING (FEET)
25	100
30	120
35	160
2. OTHER SIGNS MAY BE REQUIRED AS DIRECTED BY THE ENGINEER IN THE FIELD.
3. UPON COMPLETION OF WORK IN THE CESAR CHAVEZ INTERSECTION, SOME SIGNS MAY BE REQUIRED TO REMAIN IN PLACE FOR TRAFFIC ROUTING OF THE NEXT INTERSECTION TO BE CONSTRUCTED.
4. RECONSTRUCT INTERSECTIONS WITH STAMPED CONCRETE PAVEMENT TO THE LIMITS SHOWN ON THE ROADWAY PLANS AND TO THE DETAIL SHOWN ON THE LANDSCAPE SITE PLANS.

**LEGEND**

TRAFFIC CONTROL SIGN	
TYPE III BARRICADE	
INTERSECTION CLOSURE	
NORTH BOUND TRAFFIC ROUTING	
SOUTH BOUND TRAFFIC ROUTING	
EAST BOUND TRAFFIC ROUTING	
WEST BOUND TRAFFIC ROUTING	



NO.	REVISION	BY	DATE
 CH2M HILL ENGINEERS, INC.    TBPE FIRM NO. F-3699 9311 SAN PEDRO AVE, SUITE 800    SAN ANTONIO, TX 78216 PHONE: 210 377-3081    FAX: 210 349-8944    WWW.CH2M.COM			
<b>CITY OF SAN ANTONIO</b> CAPITAL IMPROVEMENTS MANAGEMENT SERVICES DEPARTMENT			
FRIO STREET - CESAR CHAVEZ TO HOUSTON STREET <b>FRIO STREET</b> <b>TCP PHASE 3A</b> INTERSECTION CLOSURE AT CESAR CHAVEZ BLVD			
% SUBMITTAL	PROJECT NO.: 40-00304, 40-00300	DATE: 3/31/2017	
DRWN. BY: JMS	DSGN. BY: JMS	CHKD. BY: MT	SHEET NO.: 1 of



**CONSTRUCTION PHASING AND SEQUENCE OF WORK - PHASE 3A**

1. INSTALL TEMPORARY TRAFFIC CONTROL SIGNAGE AS SHOWN, CLOSING THE FRIO STREET AT BUENA VISTA INTERSECTION TO TRAFFIC. MINIMUM SIGN SPACING DISTANCE SHALL BE AS NOTED BELOW, BUT SIGN LOCATIONS MAY BE ADJUSTED AS NECESSARY TO MEET FIELD CONDITIONS.

POSTED SPEED (MPH)	MIN. SIGN SPACING (FEET)
25	100
30	120
35	160

- 2. OTHER SIGNS MAY BE REQUIRED AS DIRECTED BY THE ENGINEER IN THE FIELD.
- 3. UPON COMPLETION OF WORK IN THE BUENA VISTA INTERSECTION, SOME SIGNS MAY BE REQUIRED TO REMAIN IN PLACE FOR TRAFFIC ROUTING OF THE NEXT INTERSECTION TO BE CONSTRUCTED.
- 4. RECONSTRUCT INTERSECTIONS WITH STAMPED CONCRETE PAVEMENT TO THE LIMITS SHOWN ON THE ROADWAY PLANS AND TO THE DETAIL SHOWN ON THE LANDSCAPE SITE PLANS.

**LEGEND**

- TRAFFIC CONTROL SIGN
- TYPE III BARRICADE
- INTERSECTION CLOSURE
- NORTH BOUND TRAFFIC ROUTING
- SOUTH BOUND TRAFFIC ROUTING
- EAST BOUND TRAFFIC ROUTING
- WEST BOUND TRAFFIC ROUTING

NOTE: SHADED SIGNS WERE PLACED PREVIOUSLY AND ARE TO REMAIN.



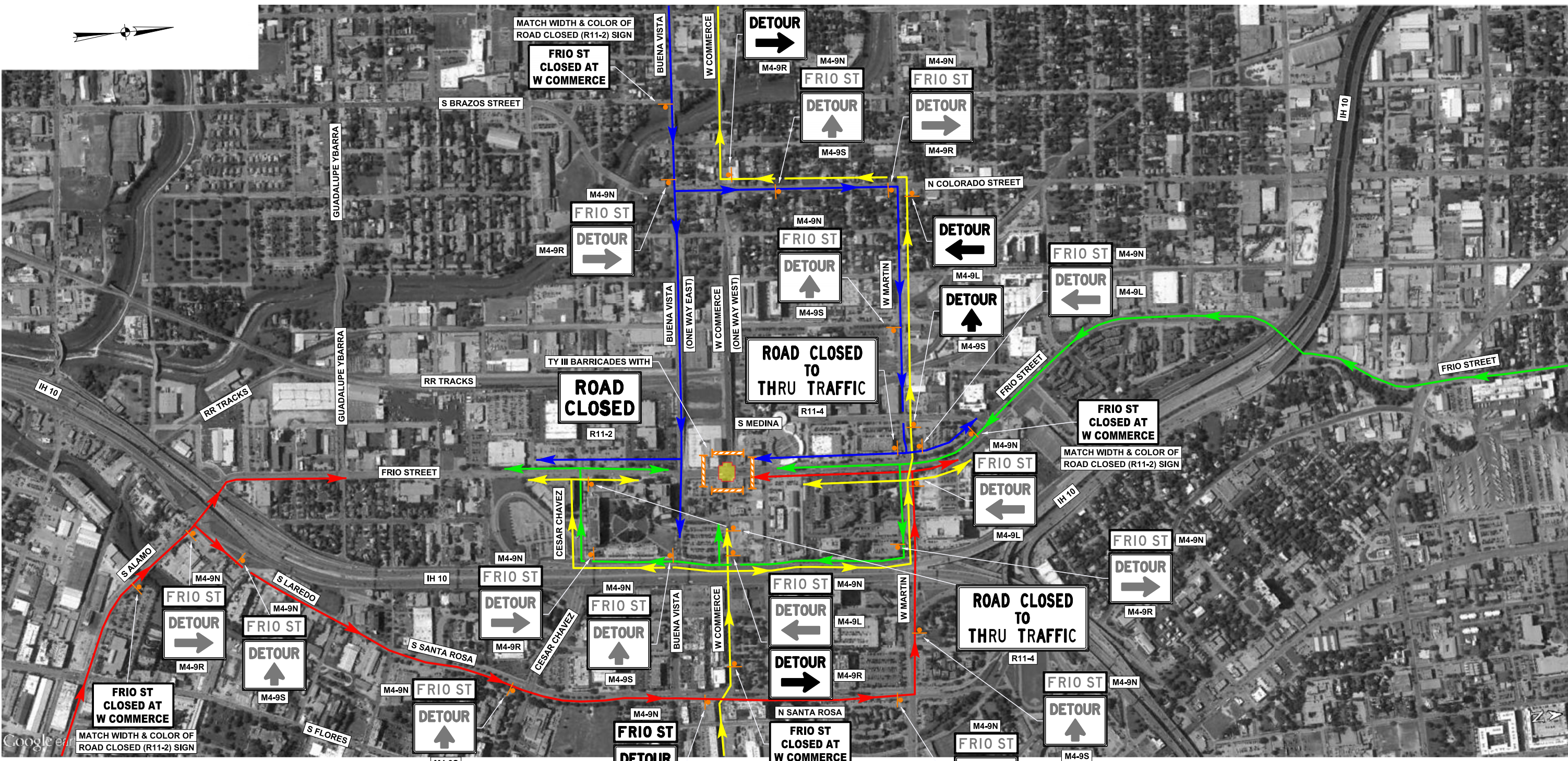
NO.	REVISION	BY	DATE

**ch2m**  
CH2M HILL ENGINEERS, INC.    TBPE FIRM NO. F-3699  
9311 SAN PEDRO AVE, SUITE 800    SAN ANTONIO, TX 78216  
PHONE: 210 377-3081    FAX: 210 349-8944    WWW.CH2M.COM

**CITY OF SAN ANTONIO**  
CAPITAL IMPROVEMENTS MANAGEMENT SERVICES DEPARTMENT

FRIO STREET - CESAR CHAVEZ TO HOUSTON STREET  
**FRIO STREET**  
**TCP PHASE 3A**  
INTERSECTION CLOSURE AT BUENA VISTA

% SUBMITTAL	PROJECT NO.: 40-00304, 40-00300	DATE: 3/31/2017
DRWN. BY: JMS	DSGN. BY: JMS	CHKD. BY: MT
SHEET NO.: 2 of		

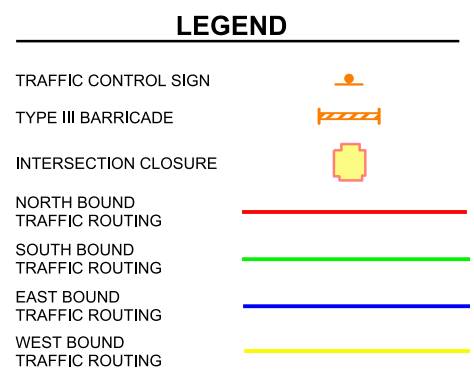


NOTE:  
SHADED SIGNS WERE PLACED  
PREVIOUSLY AND ARE TO REMAIN.

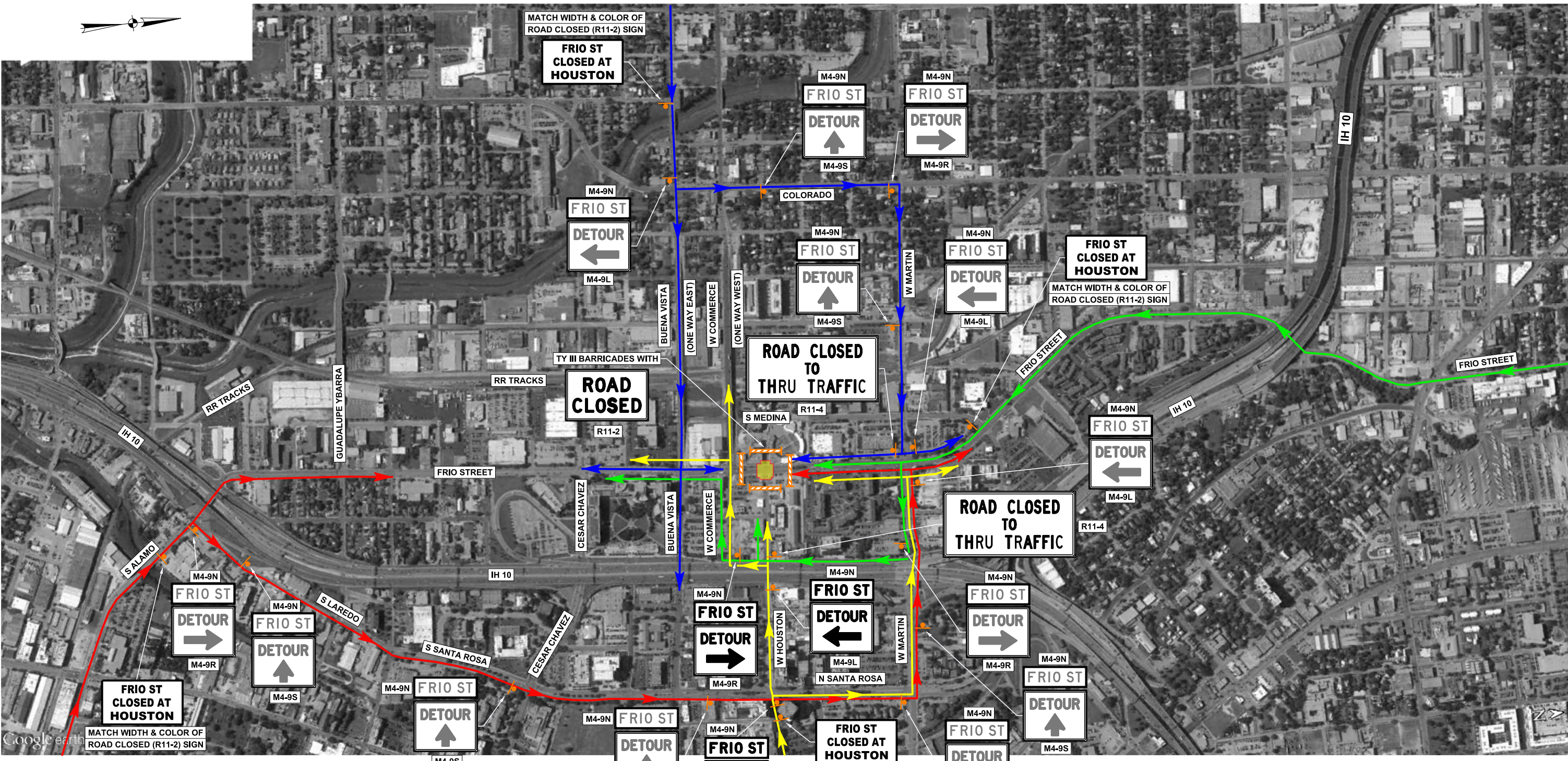
**CONSTRUCTION PHASING AND SEQUENCE OF WORK - PHASE 3A**

- INSTALL TEMPORARY TRAFFIC CONTROL SIGNAGE AS SHOWN, CLOSING THE FRIO STREET AT W COMMERCE INTERSECTION TO TRAFFIC. MINIMUM SIGN SPACING DISTANCE SHALL BE AS NOTED BELOW, BUT SIGN LOCATIONS MAY BE ADJUSTED AS NECESSARY TO MEET FIELD CONDITIONS.
 

POSTED SPEED (MPH)	MIN. SIGN SPACING (FEET)
25	100
30	120
35	160
- OTHER SIGNS MAY BE REQUIRED AS DIRECTED BY THE ENGINEER IN THE FIELD.
- UPON COMPLETION OF WORK IN THE W COMMERCE INTERSECTION, SOME SIGNS MAY BE REQUIRED TO REMAIN IN PLACE FOR TRAFFIC ROUTING OF THE NEXT INTERSECTION TO BE CONSTRUCTED.
- RECONSTRUCT INTERSECTIONS WITH STAMPED CONCRETE PAVEMENT TO THE LIMITS SHOWN ON THE ROADWAY PLANS AND TO THE DETAIL SHOWN ON THE LANDSCAPE SITE PLANS.



NO.	REVISION	BY	DATE
 CH2M HILL ENGINEERS, INC.    TBPE FIRM NO. F-3699 9311 SAN PEDRO AVE, SUITE 800    SAN ANTONIO, TX 78216 PHONE: 210 377-3081    FAX: 210 349-8944    WWW.CH2M.COM			
<b>CITY OF SAN ANTONIO</b> CAPITAL IMPROVEMENTS MANAGEMENT SERVICES DEPARTMENT			
FRIO STREET - CESAR CHAVEZ TO HOUSTON STREET <b>FRIO STREET</b> <b>TCP PHASE 3A</b> INTERSECTION CLOSURE AT W COMMERCE ST			
% SUBMITTAL	PROJECT NO.: 40-00304, 40-00300	DATE: 3/31/2017	
DRWN. BY: JMS	DSGN. BY: JMS	CHKD. BY: MT	SHEET NO.: 3 of



**CONSTRUCTION PHASING AND SEQUENCE OF WORK - PHASE 3A**

- INSTALL TEMPORARY TRAFFIC CONTROL SIGNAGE AS SHOWN, CLOSING THE FRIO STREET AT HOUSTON INTERSECTION TO TRAFFIC. MINIMUM SIGN SPACING DISTANCE SHALL BE AS NOTED BELOW, BUT SIGN LOCATIONS MAY BE ADJUSTED AS NECESSARY TO MEET FIELD CONDITIONS.
- OTHER SIGNS MAY BE REQUIRED AS DIRECTED BY THE ENGINEER IN THE FIELD.
- UPON COMPLETION OF WORK IN THE HOUSTON INTERSECTION, SOME SIGNS MAY BE REQUIRED TO REMAIN IN PLACE FOR TRAFFIC ROUTING OF THE NEXT INTERSECTION TO BE CONSTRUCTED.
- RECONSTRUCT INTERSECTIONS WITH STAMPED CONCRETE PAVEMENT TO THE LIMITS SHOWN ON THE ROADWAY PLANS AND TO THE DETAIL SHOWN ON THE LANDSCAPE SITE PLANS.

POSTED SPEED (MPH)	MIN. SIGN SPACING (FEET)
25	100
30	120
35	160

**LEGEND**

- TRAFFIC CONTROL SIGN
- TYPE III BARRICADE
- INTERSECTION CLOSURE
- NORTH BOUND TRAFFIC ROUTING
- SOUTH BOUND TRAFFIC ROUTING
- EAST BOUND TRAFFIC ROUTING
- WEST BOUND TRAFFIC ROUTING

NOTE: SHADED SIGNS WERE PLACED PREVIOUSLY AND ARE TO REMAIN.



NO.	REVISION	BY	DATE

**ch2m**  
 CH2M HILL ENGINEERS, INC. TBPE FIRM NO. F-3699  
 9311 SAN PEDRO AVE. SUITE 800 SAN ANTONIO, TX 78216  
 PHONE: 210 377-3081 FAX: 210 349-8944 WWW.CH2M.COM

**CITY OF SAN ANTONIO**  
 CAPITAL IMPROVEMENTS MANAGEMENT SERVICES DEPARTMENT

FRIO STREET - CESAR CHAVEZ TO HOUSTON STREET  
**FRIO STREET**  
**TCP PHASE 3A**  
 INTERSECTION CLOSURE AT HOUSTON STREET

% SUBMITTAL	PROJECT NO.: 40-00304, 40-00300	DATE: 3/31/2017
DRWN. BY: JMS	DSGN. BY: JMS	CHKD. BY: MT
		SHEET NO.: 4 of